



**Shaw
& Co**
ESTATE
AGENTS

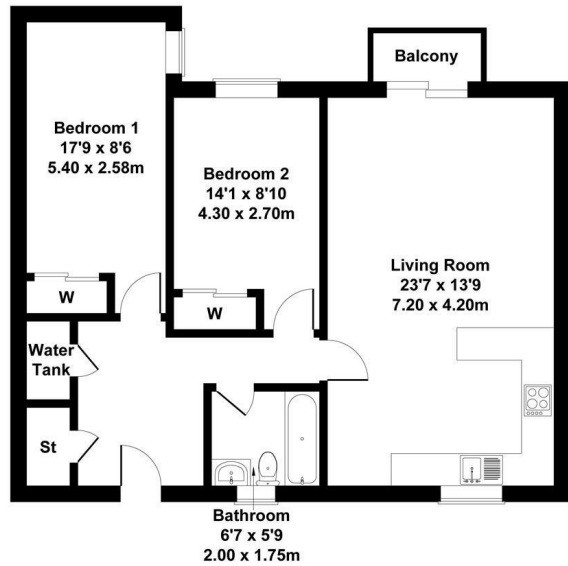
£325,000

Prince Regent Road

Hounslow, TW3 1QH

Renaissance Court, Prince Regent Road, Hounslow, TW3

Approximate Gross Internal Area
797 sq ft - 74 sq m



Not to Scale. Produced by The Plan Portal 2025
For Illustrative Purposes Only.

Shaw
& Co



Energy Efficiency Rating		Current	Potential
Very energy efficient - lower running costs			
(92 plus)	A		
(81-91)	B		
(69-80)	C		
(55-68)	D		
(39-54)	E		
(21-38)	F		
(1-20)	G		
Not energy efficient - higher running costs			
England & Wales		EU Directive 2002/91/EC	

- Two Large Double Bedrooms With Fitted Wardrobes
- Spacious Open-plan Reception and Kitchen
- First-floor Flat
- Lift Access
- Walking Distance to High Street
- 797sqft of Living Space
- Private Balcony
- Excellent Transport and Local Amenities Nearby
- Bike Storage
- Easy Access to Local Shops

Agents Note: These particulars are for guidance only. All measurements are approximate and should be rechecked by buyers / tenants. While care has been taken to ensure accuracy, they should be solely relied upon.

**Shaw
& Co**
ESTATE
AGENTS

OFFICE ADDRESS
Whitton
Twickenham
TW2 7LT

OFFICE DETAILS
0208 894 3646
whitton@shawandcoestates.com